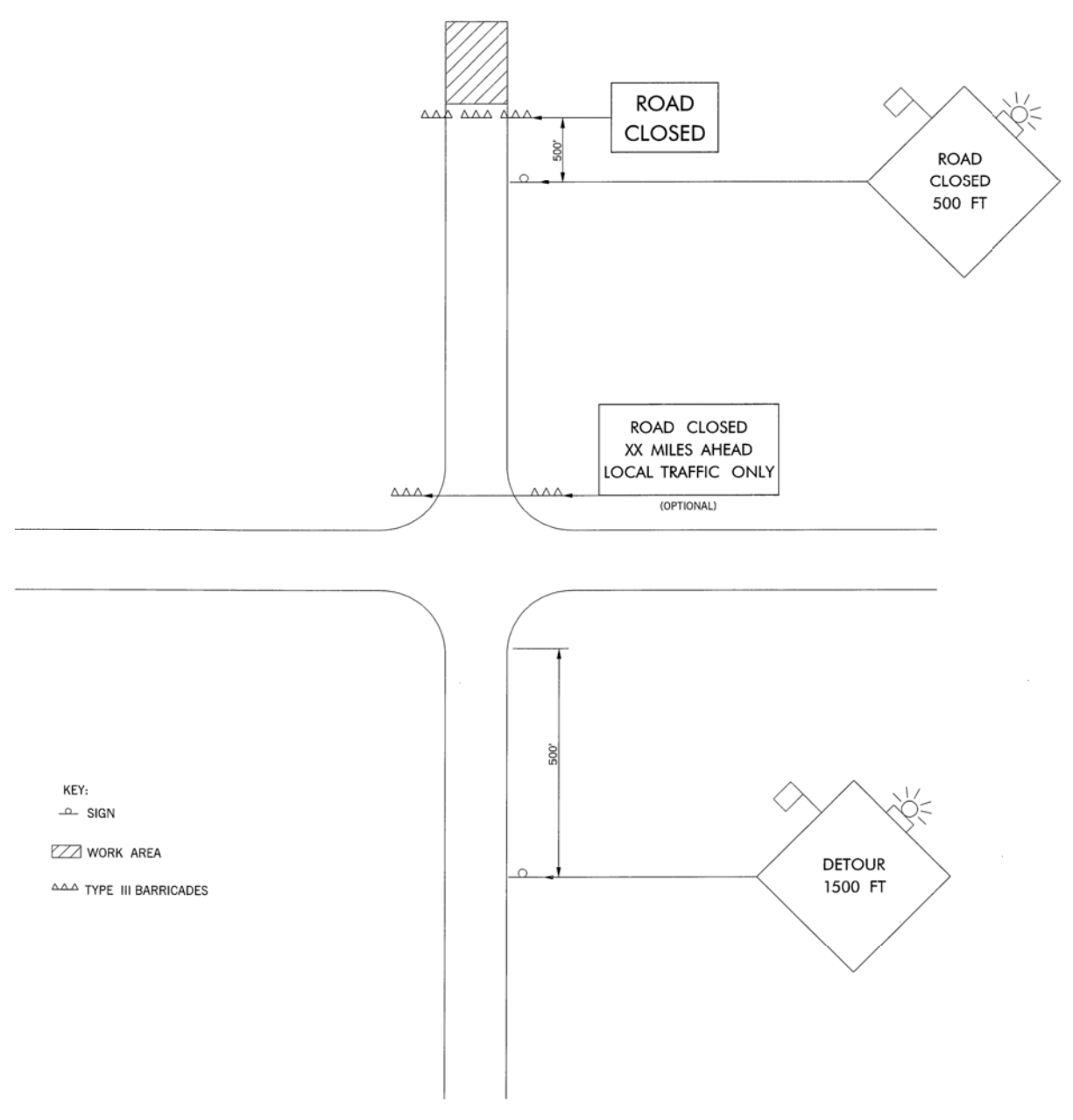


TYPICAL APPLICATION  
COUNTY ROAD (DETOUR IS ESTABLISHED)

NOTES:  
WHEN A DETOUR ROUTE IS ESTABLISHED IN CONJUNCTION WITH THE CONSTRUCTION, THE DETOUR ROUTE SHALL BE SHOWN IN THE PLANS. EITHER THE CONTRACTOR OR THE COUNTY WILL BE RESPONSIBLE FOR THE DETOUR SIGNING AND THIS RESPONSIBILITY SHALL BE STATED IN THE PLANS.

THE CONSTRUCTION SIGNING SHOWN ON THIS PLAN SHEET AND FROM THE OPPOSITE DIRECTION (NOT SHOWN) SHALL ALWAYS BE THE RESPONSIBILITY OF THE CONTRACTOR.



TYPICAL APPLICATION  
COUNTY ROAD (NO DETOUR IS ESTABLISHED)

12/16/2016 N:\AD06 YANNUBEE CREEK\Drawings\AD06-21-TRAFFIC CONTROL\_DETAIL.dgn

DESIGN	BP	06/16	McCURTAIN COUNTY	BRIDGE OVER YANUBEE CREEK
DRAWN	JH	06/16	<b>TRAFFIC CONTROL STANDARD DETAIL</b>	
CHECKED	SK	06/16		
APPROVED				
SQUAD	KCS		STATE J/P NO. 25468(04)	SHEET NO. 20